



AIR CONDITIONERS

for your home

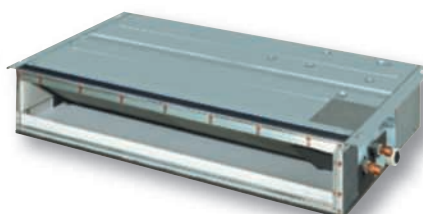
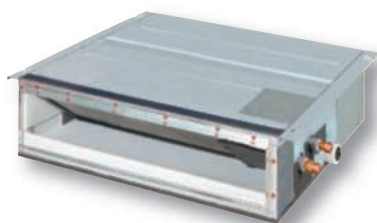
SLIM CONCEALED CEILING UNIT

R-410A



www.daikin.eu

FDKS/FDXS-E
FDKS/FDXS-C

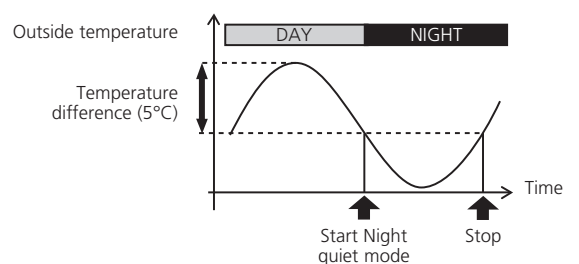




THIS SLIM UNIT IS INSTALLED WITHIN THE CEILING. IT'S BARELY NOTICEABLE, ONLY THE SUCTION AND DISCHARGE GRILLES ARE VISIBLE. THEREFORE THIS SYSTEM BLENDS UNOBTRUSIVELY WITHIN ANY INTERIOR DÉCOR, LEAVING MAXIMUM FLOOR AND WALL SPACE FOR FURNITURE, DECORATION AND FITTINGS.

COMFORT

- › Top-class **quiet operation sound level** of only 29 dB(A) is achieved. This is 5 dB(A) quieter than that of conventional models and can be compared with rustling leaves.
- › You have the choice of **5 fan speeds** to select: from high to super low.
- › Daikin's special **dry programme** reduces humidity in the room without variations in room temperature.
- › The **powerful operation** function boosts the air flow to a maximum volume for a 20-minute period, (e.g. when you come home on a hot day, rapid cooling is required). After this, the unit returns automatically to its previous settings.
- › The **night set mode** is automatically selected by pushing the 'off' timer button. This function prevents any sudden change in room temperature by gently raising / lowering the temperature before the air conditioner stops, so you can sleep more comfortably.
- › The **outdoor unit silent operation** function increases comfort by automatically lowering the operating sound of the outdoor unit by 3dB(A).
- › The **night quiet mode** reduces the operating sound of the outdoor unit by another 3 dB(A) at night (only in combination with Multi models).



YOUR AIR CONDITIONING DISCRETELY CONCEALED IN THE CEILING

- › Compact
- › Discretely concealed in the ceiling
- › Floor and wall space kept free for furnishings and decoration
- › Energy saving
- › Very quiet operation



FILTER

- › This slim concealed ceiling unit is equipped as standard with a suction filter, which removes airborne dust particles to ensure a steady supply of clean air.



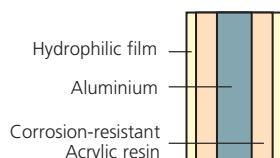
Infrared remote control (Standard)
ARC 433 A8



FLEXIBLE INSTALLATION AND EASY TO USE AND MAINTAIN

- › The outdoor unit can be installed on a roof or terrace or placed against an outside wall.
- › Daikin remote controls give you **easy control at your fingertips**.
- › Malfunction codes are shown on the digital display panel of the infrared remote control for **fast and easy maintenance**.
- › Special anti-corrosion treatment of the outdoor unit's heat exchanger fin, gives **great resistance against acid rain and salt corrosion**. Additional resistance is provided by a rust proof steel sheet on the underside of the unit.

An anti-corrosion heat exchanger cutaway view



ENERGY EFFICIENT

› **A** Energy label: up to class A

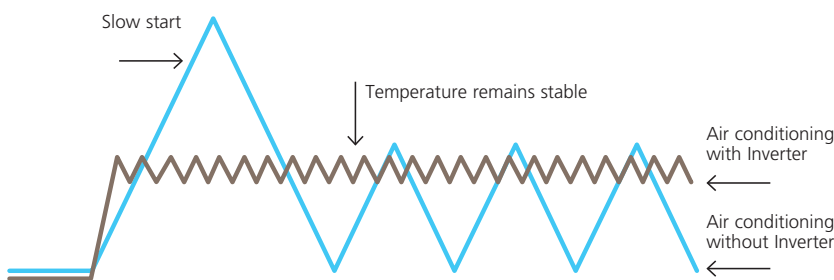
› The **inverter technology**, developed by Daikin is a true innovation in the area of climate control. The principle is simple: inverters adjust the power used to suit the actual requirement. No more, no less. This technology provides you with two concrete benefits:

1. Comfort

The inverter repays its investment many times over by improving comfort. An air conditioning system with an inverter continuously adjusts its cooling and heating output to suit the temperature in the room. The inverter shortens system start-up time enabling the required room temperature to be reached more quickly. As soon as that temperature is reached, the inverter ensures that it is constantly maintained.

2. Energy efficient

Because an inverter monitors and adjusts ambient temperature whenever needed, energy consumption drops by 30% compared to a traditional on/off system!



› The **home leave operation** button prevents large temperature differences by continuously operating at a minimum (heating mode) or maximum (cooling mode) preset level while you're out or sleeping. It also allows the indoor temperature to return quickly to your favourite comfort level.

1. When you go out push the "Home leave operation" button, and the air conditioner will adjust capacity to reach the preset temperature for "Home leave operation".
2. When you return, you will be welcomed by a comfortable air conditioned room.
3. Push the "Home leave operation" button again, and the air conditioner will adjust capacity to the set temperature for normal operation.





APPLICATION OPTIONS

- › This model can be used for **cooling and heating** or cooling only.
- › It is possible to use the indoor unit in **one room** (connecting one indoor to one outdoor) and **multiple rooms** (connecting up to 9 units in several rooms to 1 outdoor unit).



DID YOU KNOW *that* ...

an air conditioning system contributes to the good hygiene of the space for which it regulates the temperature? Through the system's operation, condensation is limited and the air is dehumidified when this becomes necessary. Furthermore, the system is equipped with filters which to a large extent neutralise hazardous particles in the air - fine dust, acarids, pollen, etc.

CAPACITY AND POWER INPUT

COOLING ONLY - INVERTER CONTROLLED (air cooled)				FDKS25E	FDKS35E	FDKS50C	FDKS60C
				RKS25G	RKS35G	RKS50G	RKS60F
Cooling capacity	min~nom~max	kW	1.3~2.4~3.0	1.4~3.4~3.8	1.7~5.0~5.3	1.7~6.0~6.5	
Nominal input	min~nom~max	kW	0.69	1.09	1.65	0.44~2.13~2.49	
EER			3.48	3.12	3.03	2.82	
Energy label			A	B	B	C	
Annual energy consumption	cooling	kWh	345	545	825	1065	
HEAT PUMP - INVERTER CONTROLLED (air cooled)				FDXS25E	FDXS35E	FDXS50C	FDXS60C
				RXS25G	RXS35G	RXS50G	RXS60F
Cooling capacity	min~nom~max	kW	1.3~2.4~3.0	1.4~3.4~3.8	1.7~5.0~5.3	1.7~6.0~6.5	
Heating capacity	min~nom~max	kW	1.3~3.2~4.5	1.4~4.0~5.0	1.7~5.8~6.0	1.7~7.0~8.0	
Nominal input	cooling	min~nom~max	kW	0.69	1.09	1.65	0.44~2.13~2.49
	heating	min~nom~max	kW	0.91	1.18	1.92	0.40~2.32~3.18
EER			3.48	3.12	3.03	2.82	
COP			3.52	3.39	3.02	3.02	
Energy label	cooling		A	B	B	C	
	heating		B	C	D	B	
Annual energy consumption	cooling	kWh	345	545	825	1065	

Note:

1) Energy label: scale from A (most efficient) to G (less efficient)

2) Annual energy consumption: based on average use of 500 running hours per year at full load (=nominal conditions)

POSSIBLE COMBINATIONS		2MKS40G (1)	2MKS50G (2)	3MKS50E (3)	4MKS58E (3)	4MKS75F (4)	5MKS90E (5)	2MX540G* (1)	2MX550G* (2)	3MX552E* (3)	3MX568G* (2)	4MX568F* (4)	4MX580E* (5)	5MX590E* (5)	RMXS112EV*	RMXS140EV*	RMXS160EV*
Max n° of indoor units		2	2	3	4	4	5	2	2	3	3	4	4	5	6	8	9
Cooling only	FDKS25E	•	•	•	•	•	•										
	FDKS35E	•	•	•	•	•	•										
	FDKS50C		•		•	•	•										
	FDKS60C					•	•										
Heat pump	FDXS25E							•	•	•	•	•	•	•	•	•	•
	FDXS35E							•	•	•	•	•	•	•	•	•	•
	FDXS50C							•	•	•	•	•	•	•	•	•	•
	FDXS60C										•	•	•	•	•	•	•
Max. cooling capacity	kW	4.50	5.40	7.07	7.30	9.33	10.50	4.50	5.40	7.30	8.42	8.73	9.60	10.50	11.2	14.0	15.5
Max. heating capacity	kW	N/A	N/A	N/A	N/A	N/A	N/A	4.70	6.30	8.30	10.63	10.68	11.00	11.50	12.5	16.0	17.5
Max. PI cooling	kW	1.35	1.73	2.16	2.24	3.06	3.98	1.35	1.73	2.25	3.33	2.95	3.56	4.01	3.50	5.09	5.40

Note:

1 For more detailed information, please consult our multi model/combination tables catalogue or your local dealer

2 (1) The indicated cooling, heating capacities and power input are indicative and are those connected to wall mounted D,E (20,25,35 class) series

(2) The indicated cooling, heating capacities and power input are indicative and are those connected to wall mounted G (20,25,35,42,50 class)/F (60 class) series

(3) The indicated cooling, heating capacities and power input are indicative and are those connected to wall mounted D (20,25,35 class)/E (50 class) series

(4) The indicated cooling, heating capacities and power input are indicative and are those connected to wall mounted D (20,25,35,50 class)/F (60,71 class) series

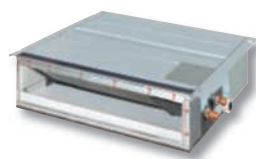
(5) The indicated cooling, heating capacities and power input are indicative and are those connected to wall mounted D (20,25,35,50 class)/E (60,71 class) series

3 N/A means not applicable since this unit is a cooling only unit

4 * At least two indoor units should be connected to these multi outdoor units

Height	200 mm
Width	700 mm
Depth	620 mm

Height	735 mm
Width	825 mm
Depth	300 mm



SPECIFICATIONS INDOOR UNITS

COOLING ONLY			FDKS25E	FDKS35E	FDKS50C	FDKS60C	
Dimensions	HxWxD	mm	200x700x620		200x900x620	200x1,100x620	
Weight		kg	21		27	30	
Air flow rate	H/L/SL	m ³ /min	8.7~7.3~6.2	8.7~7.3~6.2	12.0~10.0~8.4	16.0~13.5~11.2	
Fan speed		steps	5 steps, silent and auto				
Sound pressure level	H/L/SL	dB(A)	35/31/29	35/31/29	37/33/31	38/34/32	
Sound power level	H	dB(A)	53	53	55	56	
Piping connections	liquid		ø6.4				
	gas		ø9.5		ø12.7		
	drain	I.D.	ø20.0				
		E.D.	ø26.0				
Heat insulation		Both liquid and gas pipes					
HEAT PUMP			FDXS25E	FDXS35E	FDXS50C	FDXS60C	
Dimensions	HxWxD	mm	200x700x620		200x900x620	200x1,100x620	
Weight		kg	21		27	30	
Air flow rate	cooling	H/L/SL	m ³ /min	8.7~7.3~6.2	8.7~7.3~6.2	12.0~10.0~8.4	16.0~13.5~11.2
	heating	H/L/SL	m ³ /min	8.7~7.3~6.2	8.7~7.3~6.2	12.0~10.0~8.4	16.0~13.5~11.2
Fan speed		steps	5 steps, silent and auto				
Sound pressure level	cooling	H/L/SL	dB(A)	35/31/29	35/31/29	37/33/31	38/34/32
	heating	H/L/SL	dB(A)	35/31/29	35/31/29	37/33/31	38/34/32
Sound power level	cooling	H	dB(A)	53	53	55	56
Piping connections	liquid		ø6.4				
	gas		ø9.5		ø12.7		
	drain	I.D.	ø20.0				
		E.D.	ø26.0				
Heat insulation		Both liquid and gas pipes					

SPECIFICATIONS OUTDOOR UNITS

COOLING ONLY			RKS25G	RKS35G	RKS50G	RKS60F	
Dimensions	HxWxD	mm	550x765x285		735x825x300	735x825x301	
Weight		kg	34	34	48	48	
Casing colour			Ivory white			Ivory white	
Sound pressure level	H/L	dB(A)	46/43	48/44	48/44	49/46	
Sound power level	H	dB(A)	61	63	62	63	
Compressor		type	Hermetically sealed swing			Hermetically sealed swing	
Refrigerant type			R-410A			R-410A	
Additional refrigerant charge		kg/m	0.02 (for piping length exceeding 10m)			0.02 (for piping length exceeding 10m)	
Maximum piping length		m	20	20	30	30	
Maximum height difference		m	15	15	20	20	
Operation range	from ~ to	°CDB	-10~46			-10~46	
HEAT PUMP			RXS25G	RXS35G	RXS50G	RXS60F	
Dimensions	HxWxD	mm	550x765x285		735x825x300	735x825x300	
Weight		kg	34	34	48	48	
Casing colour			Ivory white			Ivory white	
Sound pressure level	cooling		dB(A)	46/43	48/44	49/46	
	heating		dB(A)	47/44	48/45	49/46	
Sound power level	cooling		dB(A)	61	63	62	63
Compressor		type	Hermetically sealed swing			Hermetically sealed swing	
Refrigerant type			R-410A			R-410A	
Additional refrigerant charge		kg/m	0.02 (for piping length exceeding 10m)			0.02 (for piping length exceeding 10m)	
Maximum piping length		m	20	20	30	30	
Maximum height difference		m	15	15	20	20	
Operation range	cooling	from ~ to	°CDB			-10~46	
	heating	from ~ to	°CWB			-15~18	

ACCESSORIES: CONTROL SYSTEMS

INDOOR UNITS		FDK/XS25E	FDK/XS35E	FDK/XS50C	FDK/XS60C
Wiring adapter for time clock/remote control (1)	normal open contact	KRP413A1S		KRP413A1S	
	normal open pulse contact	KRP413A1S		KRP413A1S	
Centralised control board	up to 5 rooms (2)	KRC72		KRC72	
Central remote control		DCS302C51		DCS302C51	
Unified ON/OFF control		DCS301B51		DCS301B51	
Schedule timer		DST301B51		DST301B51	
Interface adapter (3)		KRP928A2S		KRP928A2S	

(1) Wiring adapter is supplied by Daikin. Timer and other devices: field supply.

(2) Wiring adapter is also required for each indoor unit.

(3) For DIII-NET adapter

ACCESSORIES: INDOOR UNITS

INDOOR UNITS	FDK/XS25E	FDK/XS35E	FDK/XS50C	FDK/XS60C
Anti-theft protection for remote control	KKF917AA4		KKF917AA4	
Suction grille	KDFG19A45		KDFG19A45	

ACCESSORIES: OUTDOOR UNITS

OUTDOOR UNITS	RK/XS25G	RK/XS35G	RK/XS50G	RK/XS60F
Air direction adjustment grille	KPW937AA4		KPW945AA	
Drain plug *	KPW937AA4		KKP937A4	

* standard accessory (only for heat pump models)



Daikin's unique position as a manufacturer of air conditioning equipment, compressors and refrigerants has led to its close involvement in environmental issues.

For several years Daikin has had the intention to become a leader in the provision of products that have limited impact on the environment.

This challenge demands the eco design and development of a wide range of products and an energy management system, resulting in energy conservation and a reduction of waste.



Daikin Europe N.V. is approved by LRQA for its Quality Management System in accordance with the ISO9001 standard. ISO9001 pertains to quality assurance regarding design, development, manufacturing as well as to services related to the product.



ISO14001 assures an effective environmental management system in order to help protect human health and the environment from the potential impact of our activities, products and services and to assist in maintaining and improving the quality of the environment.



Daikin units comply with the European regulations that guarantee the safety of the product.



Daikin Europe N.V. participates in the Eurovent Certification Programme for Air Conditioners (AC), Liquid Chilling Packages (LCP) and Fan Coil Units (FC); the certified data of certified models are listed in the Eurovent Directory. Multi units are Eurovent certified for combinations up to 2 indoor units.

The present leaflet is drawn up by way of information only and does not constitute an offer binding upon Daikin Europe N.V.. Daikin Europe N.V. has compiled the content of this leaflet to the best of its knowledge. No express or implied warranty is given for the completeness, accuracy, reliability or fitness for particular purpose of its content and the products and services presented therein. Specifications are subject to change without prior notice. Daikin Europe N.V. explicitly rejects any liability for any direct or indirect damage, in the broadest sense, arising from or related to the use and/or interpretation of this leaflet. All content is copyrighted by Daikin Europe N.V.

Daikin products are distributed by:

DAIKIN EUROPE N.V.

Naamloze Vennootschap
Zandvoordestraat 300
B-8400 Oostende, Belgium
www.daikin.eu
BTW: BE 0412 120 336
RPR Oostende



Mixed Sources

Product group from well-managed forests and other controlled sources
www.fsc.org Cert no. SGS-COC-003924
© 1996 Forest Stewardship Council



EPLEN08-014